

# Prime Signiture Frameless

Prime Cabinets

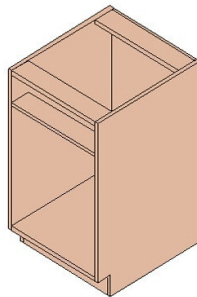


## Cabinet Specifications

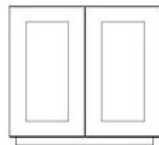
<b>Color</b>	Multiple Options/Color Match Available
<b>Door Type</b>	Shaker or Slab
<b>Box Material</b>	Plywood/Maple
<b>Size</b>	Standard and Custom Sizes Available
<b>Surface Treatment</b>	Scratch Resistant Paint

### Visuals

#### Box Construction



#### Overlay



### Key Fetures

Faceframe	None
Box Construction	1/2" Plywood
Finished Sides	Painted
Toe Kick Assembly	1/2" Plywood
Toe Kick Finish	1/4" Solid Wood
Shelf Construction	1/2" Plywood
Base Cabinet Shelf	1/2" Depth
Drawer Construction	5/8" Dovetail Solid Woo
Drawer Guides	Undermount
Drawer Glide Extension	Full Extension
Soft Clost	Yes
Door Overlay	Full Overlay
Door Hinges	6 Way Adjustable Hidden, Soft Close
Door Construction	Maple
Door Finish	Painted or Stained

### Manufacture Details

ISO 9001-2015 Manufacture Certification  
 Constructed to KCMA Standards  
 CARB P II & EPA Certified  
 100% QC Inspection